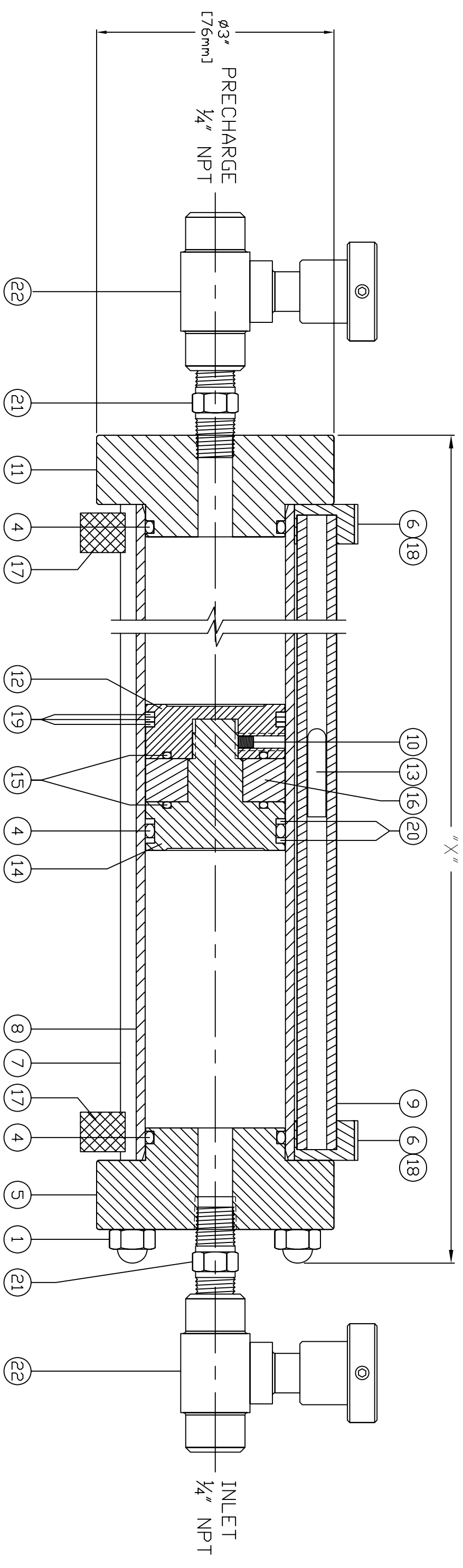
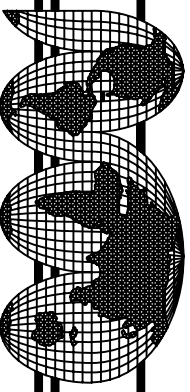


MAOP: 1800 PSIG
HYDRO TEST PRESSURE: 3600 PSIG
VOLUMES OVER 1000cc NOT D.O.T. EXEMPT



DATE	REV.	RECORD	AUTHORIZED	DRAFTER	CHECKED
05/21/07	-	DR #7754	GB	GL	



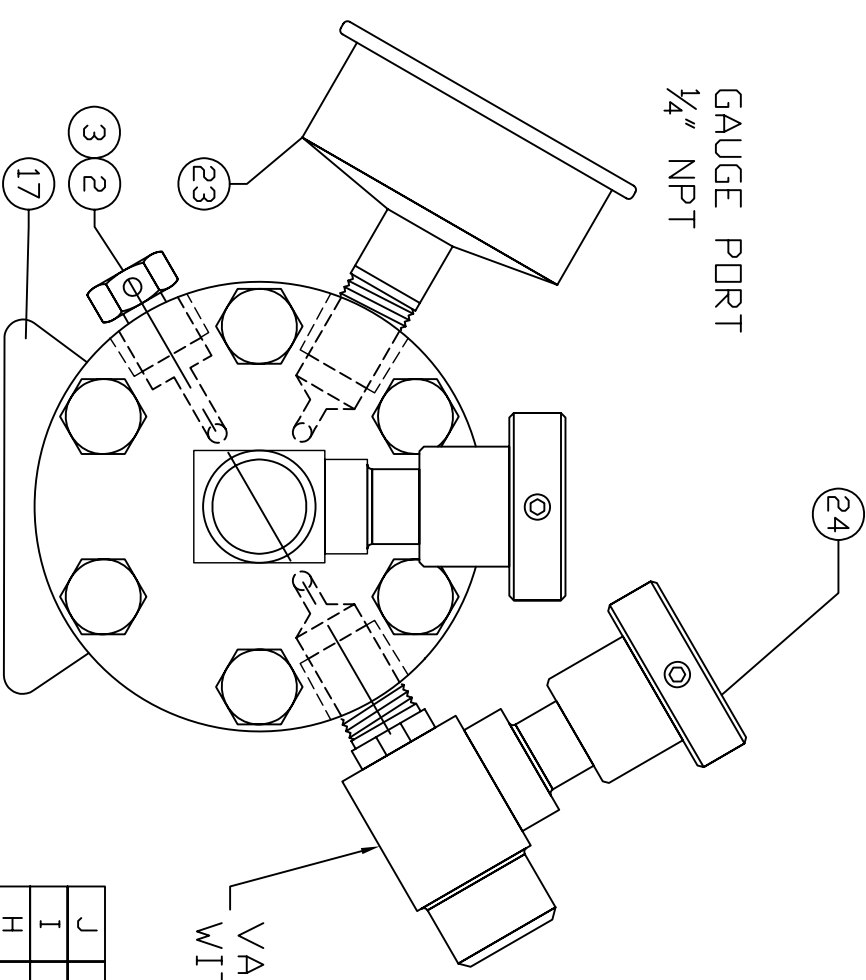
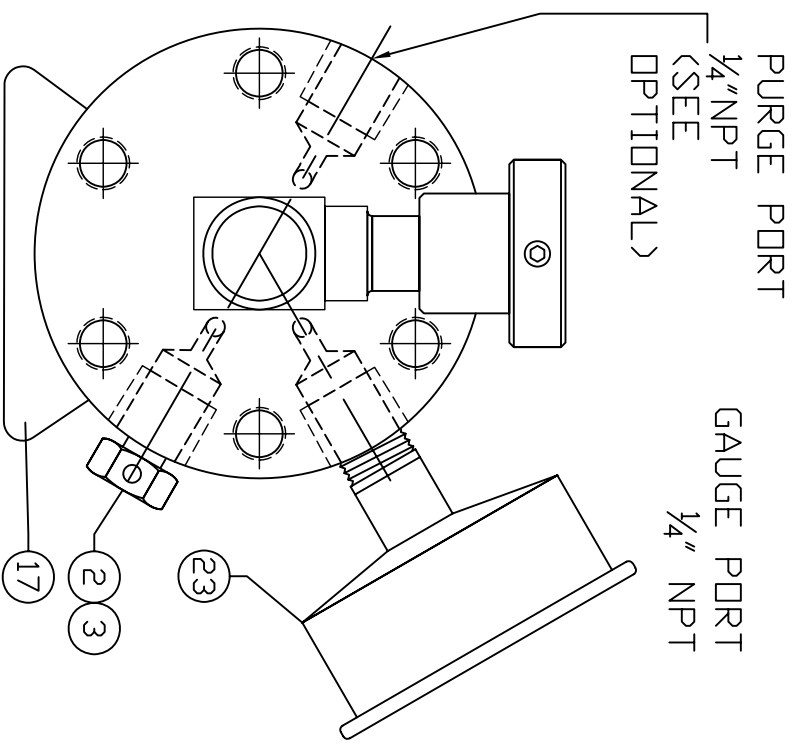
THIS DOCUMENT CONTAINS CONFIDENTIAL INFORMATION WHICH IS THE PROPERTY OF WELKER ENGINEERING COMPANY. IT CONTAINS SHALL NOT BE USED, REPRODUCED OR SOLD WITHOUT THE EXPRESS WRITTEN PERMISSION OF WEC. SHALL NOT BE COPIED OR OTHERWISE REPRODUCED IN WHOLE OR IN PART AND SHALL NOT BE REVEALED OR DISCLOSED TO THIRD PARTIES. THIS DOCUMENT SHALL REMAIN THE PROPERTY OF WEC AND SHALL BE RETURNED UPON DEMAND.



P.O. BOX 138
 13839 WEST BELLFORT
 SUGARLAND, TEXAS 77487-0138
 PHONE (281) 491-2331
 FAX (281) 491-8344

TITLE: CONSTANT PRESSURE SAMPLE CYLINDER		DRAWING NUMBER: AD068C0CRN	
STYLE: CP2G		SHEET: 1 of 2	
COMPANY:	DRAWN BY: GL	SCALE: 3/4	APPROVED BY:
	DATE: 05/21/07		REV: -

MAOP: 1800 PSIG HYDRO TEST PRESSURE: 3600 PSIG VOLUMES OVER 1000cc NOT D.O.T. EXEMPT



J	200cc	10.50" (266)
I	1000cc	29.00" (736)
H	400cc	14.53" (369)
G	250cc	11.25" (286)
F	1050cc	30.88" (784)
E	800cc	26.38" (670)
D	500cc	17.38" (441)
C	300cc	13.00" (330)
B	150cc	9.00" (228)
A	100cc	7.58" (192)
0	50cc	6.38" (162)
[]	VOLUME	"X" OVERALL LENGTH [in-mm]

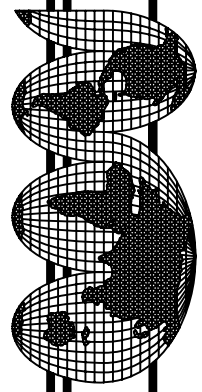
24	1	VALVE M/F	NV1MF
23	2	GAUGE 0-2000# CMB LF	GA006DD
22	2	VALVE F/F	NV1FF
21	2	HEX NIPPLE	MF004DX
20	2	BACK UP	BU222SP
19	3	BACK UP	BU222SL
18	2	TRACKER TUBE SEAT	CP2G1029
17	2	CYLINDER FOOT	CP2S1009
16	1	RING MAGNET ASSY.	MAG06
15	2	D-RING	V070122
14	1	PISTON, MALE	CP2G1014
13	1	PIN TRACKER	CP2G1040
12	1	PISTON, FEMALE	CP2G1015
11	1	PRECHARGE END CAP	CP2G1019CRN
10	1	SET SCREW	MA038BX
9	1	TRACKER TUBE	CP2G1028CJ
8	1	CYLINDER	CP2S1004CJ
7	6	TIE BOLT	CP2S1005CJ
6	2	CLIP	MM031DD
5	1	PRODUCT END CAP	CP2S1002CRN
4	3	O-RING 90 DURO	V090222
3	2	BURST DISC SET	MR002DD
2	2	BURSTING RELIEF CAP	R1000
1	6	CROWN NUT	MA029DX
NO.	REQ.	DESCRIPTION	PART NUMBER

PRECHARGE END CAP DETAIL

PRODUCT END CAP DETAIL

VALVE IS INCLUDED WITH PURGE OPTION

DATE	REV.	RECORD	AUTHORIZED	DRAFTER	CHECKED
05/21/07	-	DR #7754	GB	GL	



THIS DOCUMENT CONTAINS CONFIDENTIAL INFORMATION WHICH IS THE PROPERTY OF WELKER ENGINEERING COMPANY. IT CONTAINS SHALL NOT BE USED, REPRODUCED OR SOLD WITHOUT THE EXPRESS WRITTEN PERMISSION OF WELKER ENGINEERING COMPANY. ANY REPRODUCTION IN WHOLE OR IN PART AND SHALL NOT BE REVEALED OR DISCLOSED TO THIRD PARTIES. THIS DOCUMENT SHALL REMAIN THE PROPERTY OF WELKER AND SHALL BE RETURNED UPON DEMAND.

P.O. BOX 138
13839 WEST BELLFORT
SUGARLAND, TEXAS 77487-0138
PHONE (281) 491-2331
FAX (281) 491-8344

TITLE: CONSTANT PRESSURE SAMPLE CYLINDER
STYLE: CP2G

DRAWN BY:	SCALE:	APPROVED BY:	DRAWING NUMBER:
GL	3/4		AD068C0CRN
DATE:			SHEET:
05/21/07			2 of 2