

MATERIAL: 316 S.S. / ALUM. PISTON

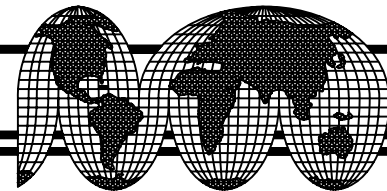
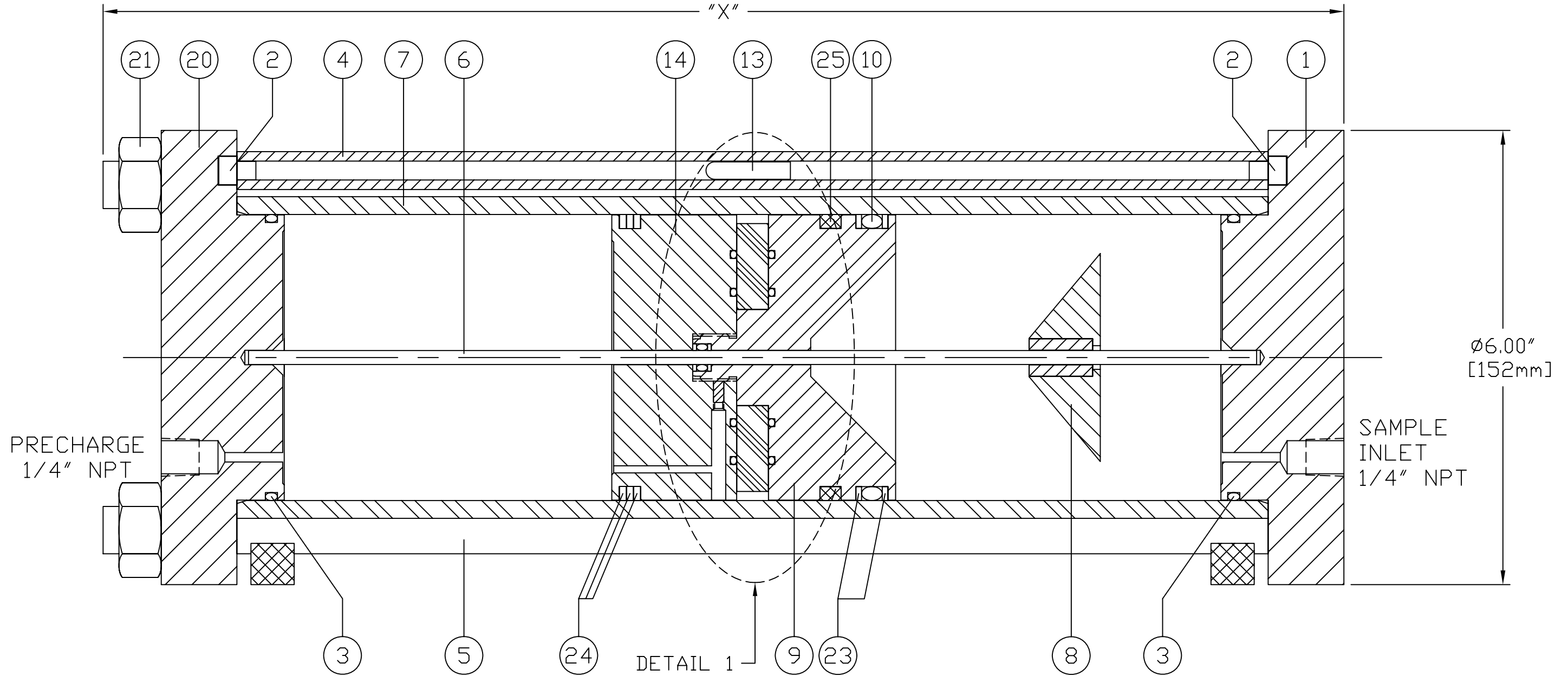
FINISH: N/A

TO PROTECT SENSITIVE PIPELINE EQUIPMENT, WELKER ENGINEERING COMPANY RECOMMENDS INSTALLING ANY PRODUCT PROTRUDING INTO THE PIPELINE UPSTREAM OF THE STRAINER.

DRAWING NUMBER: AD078CD.N.CRN

REV: D

**MAOP: 2160 PSIG @ -20°F TO 100°F**  
**HYDRO TEST PRESSURE: 3600 PSIG**



**WELKER®**

TITLE: CONSTANT PRESSURE SAMPLE CYLINDER  
 STYLE: CP-5GM, CRN APPROVAL

COMPANY:

DRAWN BY: TIM	SCALE: STF	APPROVED BY:	DRAWING NUMBER: AD078CD.N.CRN
DATE: 11/28/05			SHEET: 1 of 3
			REV: D

THIS DOCUMENT CONTAINS CONFIDENTIAL INFORMATION WHICH IS THE PROPERTY OF WELKER ENGINEERING COMPANY (WEC). THIS DOCUMENT AND THE INFORMATION WHICH IT CONTAINS SHALL NOT BE USED, EXPLOITED OR SOLD WITHOUT THE EXPRESS WRITTEN PERMISSION OF WEC. SHALL NOT BE COPIED OR OTHERWISE REPRODUCED IN WHOLE OR IN PART AND SHALL NOT BE REVEALED OR DISCLOSED TO THIRD PARTIES. THIS DOCUMENT SHALL REMAIN THE PROPERTY OF WEC AND SHALL BE RETURNED UPON DEMAND

P.O. BOX 138  
 13839 WEST BELLFORT  
 SUGARLAND, TEXAS 77487-0138  
 PHONE (281) 491-2331  
 FAX (281) 491-8344

DATE	REV.	RECORD	AUTHORIZED	DRAFTER	CHECKED
8/1/05	-	DR# 7344	GB	TIM	GB
10/1/05	A	CN# 5304	GB	TIM	GB
11/15/05	B	CN# 5305	GB	TIM	GB
12/20/05	C	CN# 5356	GB	TIM	GB
7/24/07	D	CN# 5894	TDP	EBC	

MATERIAL: 316 S.S. / ALUM. PISTON

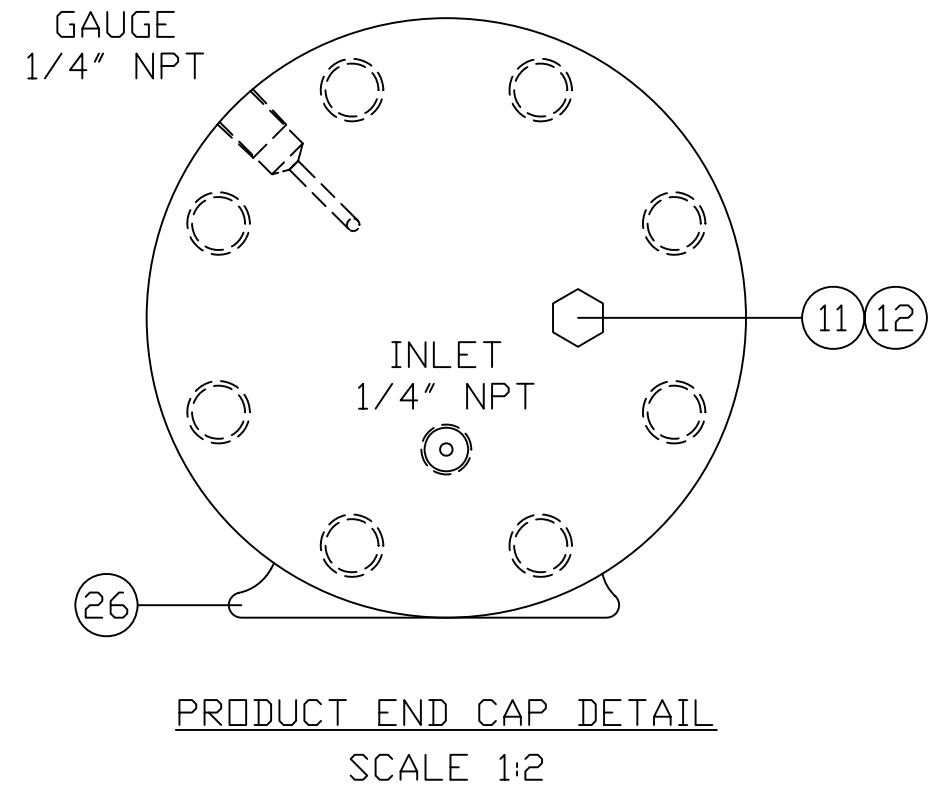
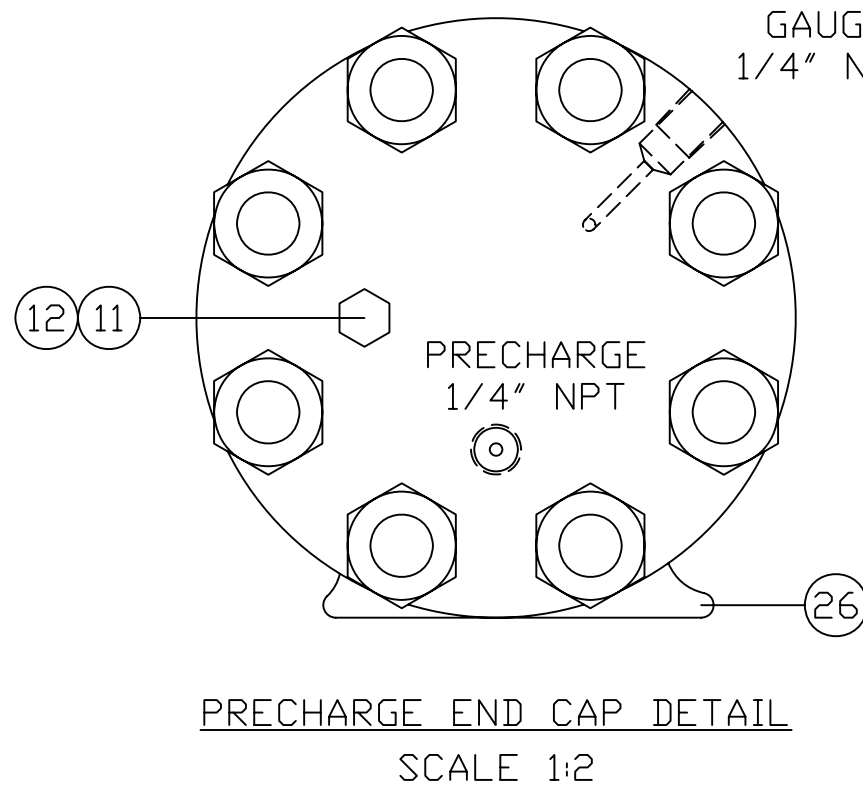
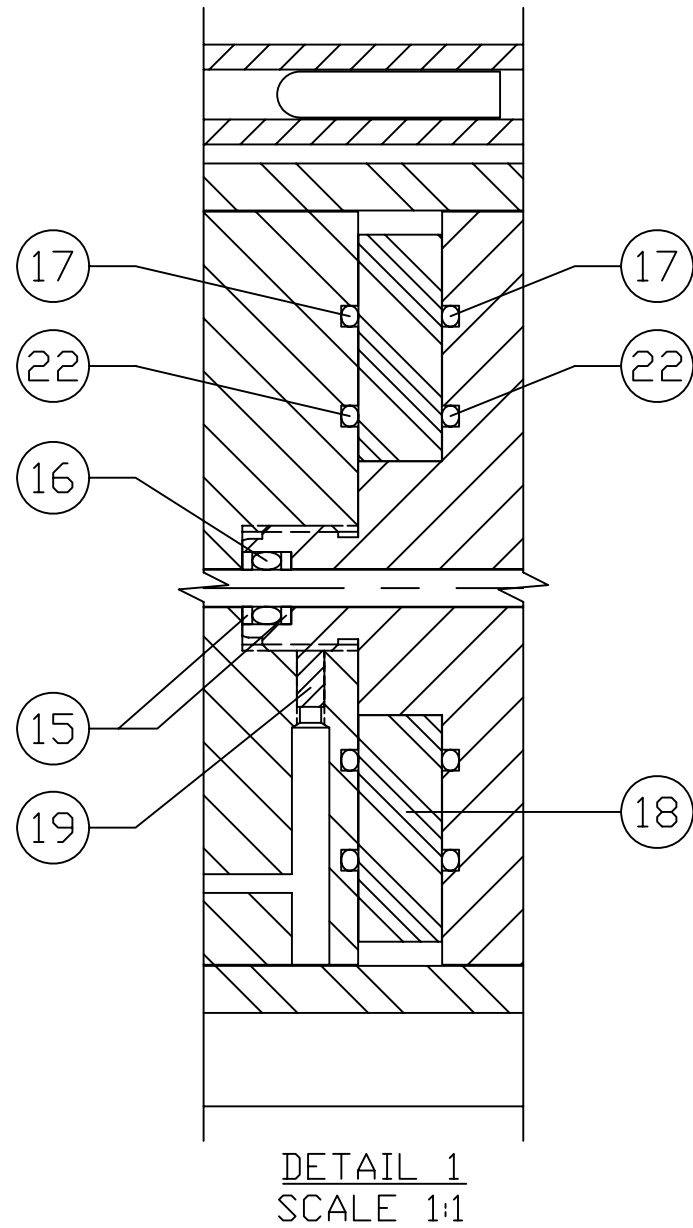
FINISH: N/A

TO PROTECT SENSITIVE PIPELINE EQUIPMENT, WELKER ENGINEERING COMPANY RECOMMENDS INSTALLING ANY PRODUCT PROTRUDING INTO THE PIPELINE UPSTREAM OF THE STRAINER.

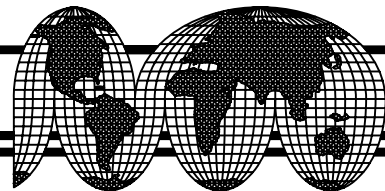
DRAWING NUMBER: AD078C0.N.CRN

REV: D

**MAOP: 2160 PSIG @ -20°F TO 100°F**  
**HYDRO TEST PRESSURE: 3600 PSIG**



DATE	REV.	RECORD	AUTHORIZED	DRAFTER	CHECKED
8/1/05	-	DR# 7344	GB	TIM	GB
10/1/05	A	CN# 5304	GB	TIM	GB
11/15/05	B	CN# 5305	GB	TIM	GB
12/20/05	C	CN# 5356	GB	TIM	GB
7/24/07	D	CN# 5894	TDP	EBC	



**WELKER®**

THIS DOCUMENT CONTAINS CONFIDENTIAL INFORMATION WHICH IS THE PROPERTY OF WELKER ENGINEERING COMPANY (WEC). THIS DOCUMENT AND THE INFORMATION WHICH IT CONTAINS SHALL NOT BE USED, EXPLOITED OR SOLD WITHOUT THE EXPRESS WRITTEN PERMISSION OF WEC. SHALL NOT BE COPIED OR OTHERWISE REPRODUCED IN WHOLE OR IN PART AND SHALL NOT BE REVEALED OR DISCLOSED TO THIRD PARTIES. THIS DOCUMENT SHALL REMAIN THE PROPERTY OF WEC AND SHALL BE RETURNED UPON DEMAND.

P.O. BOX 138  
 13839 WEST BELLFORT  
 SUGARLAND, TEXAS 77487-0138  
 PHONE (281) 491-2331  
 FAX (281) 491-8344

TITLE: CONSTANT PRESSURE SAMPLE CYLINDER STYLE: CP-5GM, CRN APPROVAL			
COMPANY:			
DRAWN BY: TIM	SCALE: STF	APPROVED BY:	DRAWING NUMBER: AD078C0.N.CRN
DATE: 11/28/05			SHEET: 2 of 3
			REV: D

MATERIAL: 316 S.S. / ALUM. PISTON

FINISH: N/A

TO PROTECT SENSITIVE PIPELINE EQUIPMENT, WELKER ENGINEERING COMPANY RECOMMENDS INSTALLING ANY PRODUCT PROTRUDING INTO THE PIPELINE UPSTREAM OF THE STRAINER.

DRAWING NUMBER: AD078C0.N.CRN

REV: D

# MAOP: 2160 PSIG @ -20°F TO 100°F HYDRO TEST PRESSURE: 3600 PSIG

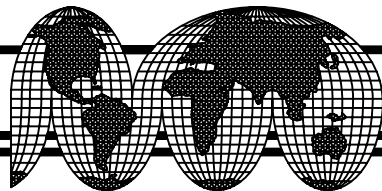
F	6000cc	42.44" (1077)
E	3600cc	28.56" (725)
D	5000cc	36.69" (931)
C	4000cc	30.94" (785)
B	3000cc	24.94" (633)
A	2000cc	19.44" (493)
□	1500cc	16.56" (420)
[ ]	CYLINDER VOLUME	"X" (mm)

-	1	PRECHARGE END CAP W/ PURGE PORT	CP5GM1019CRN
OPTIONAL: PRECHARGE END CAP			

-	1	PRODUCT END CAP W/ PURGE PORT	CP5GM1015CRN
OPTIONAL: PRODUCT END CAP			

NO.	REQ.	DESCRIPTION	PART NUMBER
26	2	CYLINDER FEET	CP5S1015
25	1	BEARING	CP5S1041
24	3	BACK UP, SPLIT	BU340SL
23	2	BACK UP, SPIRAL	BU340SP
22	2	□-RING	V070130
21	8	HEX NUT, S.S.	MA008□XCRN
20	1	PRECHARGE END CAP	CP5GM1012NCRN
19	1	SET SCREW	MA038BX
18	1	RING MAGNET	MAG08
17	2	□-RING	V070146
16	1	□-RING	V090106
15	2	SOLID BACK UP RING	CP5GM1007
14	1	FEMALE PISTON	CP5GM1010
13	1	TRACKER TUBE PIN	CP2G1040
12	2	BURST DISC SET	MR106□□
11	2	BURSTING RELIEF CAP	R1000
10	1	□-RING	V090340
9	1	MALE PISTON	CP5GM1009
8	1	MIXER	CP5GM1014
7	1	CYLINDER	CP5S1004[ ]CRN
6	1	CYLINDER SAVER ROD	CP5GM1013[ ]
5	8	TIE BOLT	CP5S1002[ ]N
4	1	TRACKER TUBE	CP5G1013[ ]
3	2	□-RING	V070238
2	2	PIN	CP2G1006
1	1	PRODUCT END CAP	CP5GM1012CRN

DATE	REV.	RECORD	AUTHORIZED	DRAFTER	CHECKED
8/1/05	-	DR# 7344	GB	TIM	GB
10/1/05	A	CN# 5304	GB	TIM	GB
11/15/05	B	CN# 5305	GB	TIM	GB
12/20/05	C	CN# 5356	GB	TIM	GB
7/24/07	D	CN# 5894	TDP	EBC	



**WELKER®**

THIS DOCUMENT CONTAINS CONFIDENTIAL INFORMATION WHICH IS THE PROPERTY OF WELKER ENGINEERING COMPANY (WEC). THIS DOCUMENT AND THE INFORMATION WHICH IT CONTAINS SHALL NOT BE USED, EXPLOITED OR SOLD WITHOUT THE EXPRESS WRITTEN PERMISSION OF WEC. SHALL NOT BE COPIED OR OTHERWISE REPRODUCED IN WHOLE OR IN PART AND SHALL NOT BE REVEALED OR DISCLOSED TO THIRD PARTIES. THIS DOCUMENT SHALL REMAIN THE PROPERTY OF WEC AND SHALL BE RETURNED UPON DEMAND.

P.O. BOX 138  
13839 WEST BELLFORT  
SUGARLAND, TEXAS 77487-0138  
PHONE (281) 491-2331  
FAX (281) 491-8344

TITLE: CONSTANT PRESSURE SAMPLE CYLINDER STYLE: CP-5GM, CRN APPROVAL			
COMPANY:			
DRAWN BY: TIM	SCALE: STF	APPROVED BY:	DRAWING NUMBER: AD078C0.N.CRN
DATE: 11/28/05			SHEET: 3 of 3
		REV: D	