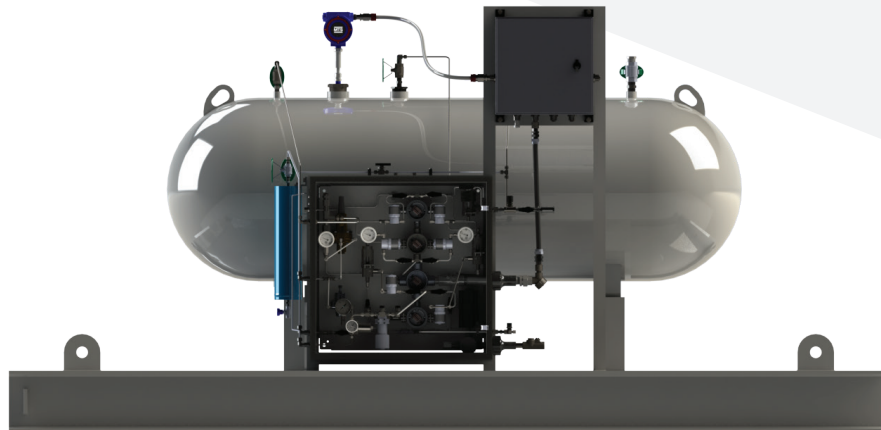


# PulseInject™ Injection System



The Welker PulseInject™ Injection System is a pumpless, pressure-driven odorant injection system designed to inject liquid odorant proportional to flow into a natural gas pipeline.



## Features

- Few moving parts
- Low pressure differential required for injection
- Programmable Logic Controller (PLC) automatically adjusts the injection volume and rate to changing flow conditions
- Remote monitoring and communication using Modbus or Ethernet
- Audit trail and alarms log backed up to microSD card
- Welker F-9 Filter and Welker F-5 Filter Dryer remove contaminants from odorant and pneumatic supplies
- Low-pressure odorant supply tank with 110% containment sloped to drain

## Benefits

- Reduced maintenance
- Reduced pneumatic supply pressure required compared to pump injection systems
- No manual injection volume adjustment
- Continuous proportional to flow odorization
- Off-site system monitoring and troubleshooting
- Time-and-date-stamped historical records for accurate reporting, planning, and scheduling
- Contaminant removal prolongs operational life and reliability
- Skid containment protects the ground from contamination and ease clean up
- Identical redundant solenoids limit interruptions to operation

## SPECIFICATIONS

PULSEINJECT INJECTION SYSTEM

### PulseInject

Materials of Construction	316/316 L Stainless Steel, Painted Carbon Steel, PTFE, Kalrez®, Viton®
Ambient Temperature	-4 °F to 120 °F
Power	DC 24 V, AC 120 V, Optional Solar Panel
Injection Outlet Connection	¼" Tubing
Injection Pressure	Up to 1480 psig
Odorant Inlet Pressure Required	15 psig – 50 psig
Instrument Gas Pressure Required	30 psig – 1480 psig
Power Required	DC 24 V, AC 120 V
Odorant Volume	120 US Gallon, 250 US Gallon, 325 US Gallon, 500 US Gallon, 1000 US Gallon

Weight and/or dimensions are approximate.  
Specifications subject to change without notice.

